

— WE CREATE MOBILE WORKPLACES —

# MAXUS

## e-Deliver 3 & e-Deliver 9

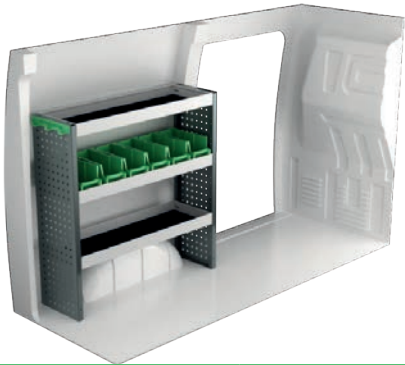


**SYSTEM**   
**EDSTRÖM**

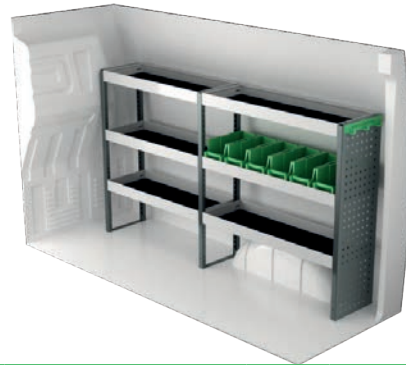
# MAXUS e-DELIVER 3 SWB

Suggested hours is the recommended mounting time for experienced retailers.

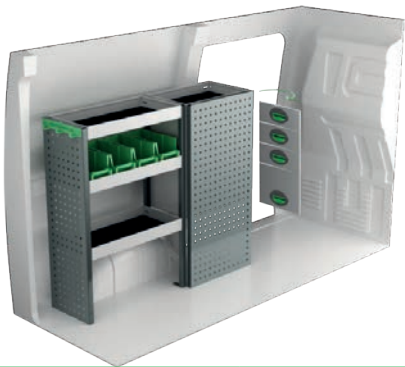
On electric and hybrid vans we recommend mounting by an experienced installer. Batteries and cable harnesses for approximately 400 volt must be taken in consideration. Cost of a floor may be added.



Art.No	LxDxH	Kg	Hr.
F49121	971x300x1000 mm	23	2,6



Art.No	LxDxH	Kg	Hr.
F49120	1785x300x1000 mm	32	3,4



Art.No	LxDxH	Kg	Hr.
F49123	1138x300x1000 mm	44	3,7



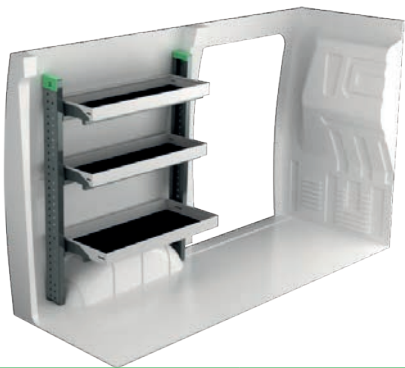
Art.No	LxDxH	Kg	Hr.
F49122	1785x300x1000 mm	53	4,5



Art.No	LxDxH	Kg	Hr.
F49125	971x300x1140 mm	44	4,7



Art.No	LxDxH	Kg	Hr.
F49124	1785x300x1185 mm	62	5,5



Art.No	Height	Kg	Hr.
F49127	892x400x1200 mm	32	2,9

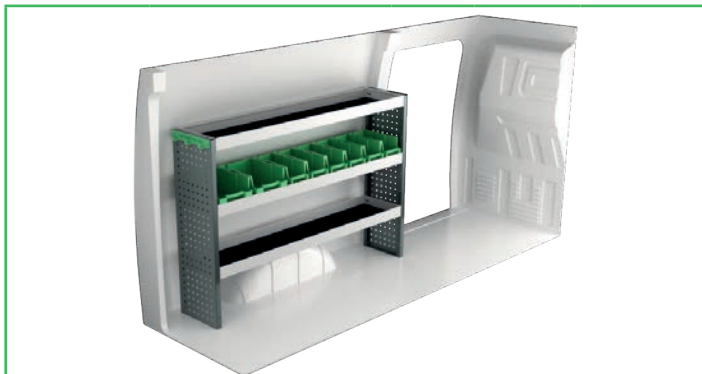


Art.No	Height	Kg	Hr.
F49126	1676x470x1200 mm	49	2,9

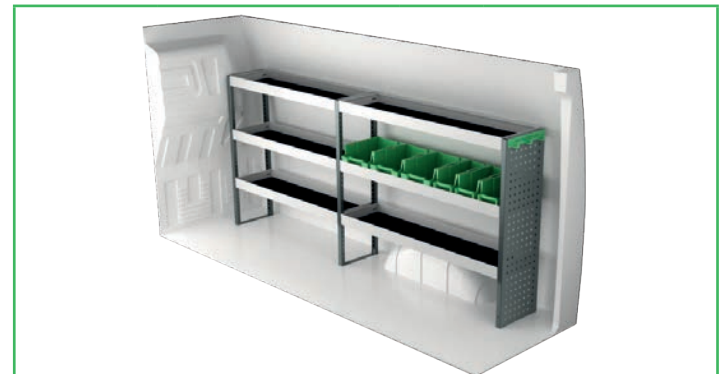
# MAXUS e-DELIVER 3 LWB

Suggested hours is the recommended mounting time for experienced retailers.

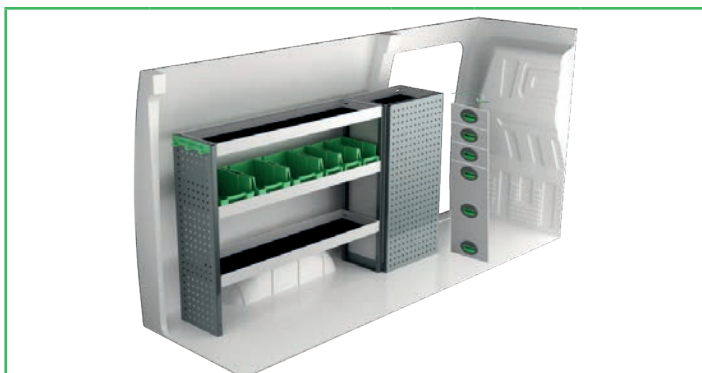
On electric and hybrid vans we recommend mounting by an experienced installer. Batteries and cable harnesses for approximately 400 volt must be taken in consideration. Cost of a floor may be added.



Art.No	LxDxH	Kg	Hr.
F49101	2267x300x1000 mm	29	2,6



Art.No	LxDxH	Kg	Hr.
F49100	2267x300x1000 mm	39	3,4



Art.No	LxDxH	Kg	Hr.
F49103	1709x300x1000 mm	64	3,7



Art.No	LxDxH	Kg	Hr.
F49102	2267x300x1000 mm	59	4,5



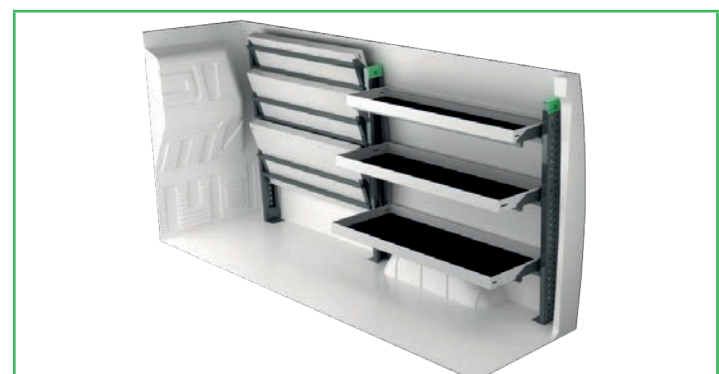
Art.No	LxDxH	Kg	Hr.
F49105	1570x300x1230 mm	57	4,8



Art.No	LxDxH	Kg	Hr.
F49104	2267x300x1185 mm	73	5,5



Art.No	Height	Kg	Hr.
F49107	1497x470x1200 mm	45	2,9

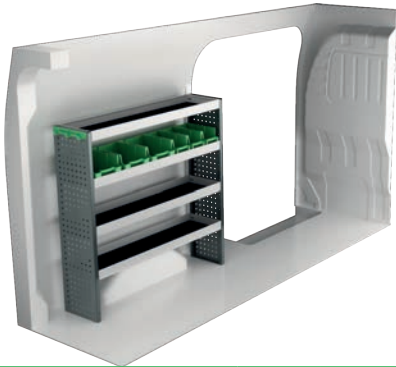


Art.No	Height	Kg	Hr.
F49106	2358x470x1200 mm	73	5,3

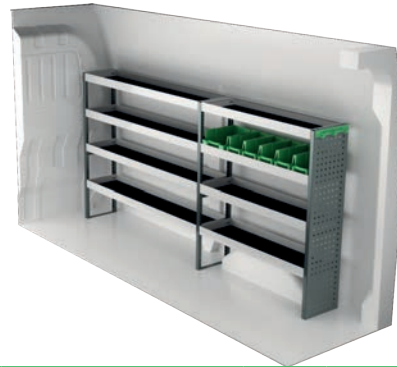
# MAXUS e-DELIVER 9 SWB

Suggested hours is the recommended mounting time for experienced retailers.

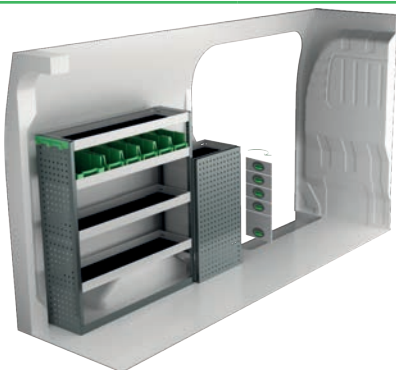
On electric and hybrid vans we recommend mounting by an experienced installer. Batteries and cable harnesses for approximately 400 volt must be taken in consideration. Cost of a floor may be added.



Art.No	LxDxH	Kg	Hr.
F49161	1240x300x1220 mm	33	2,6



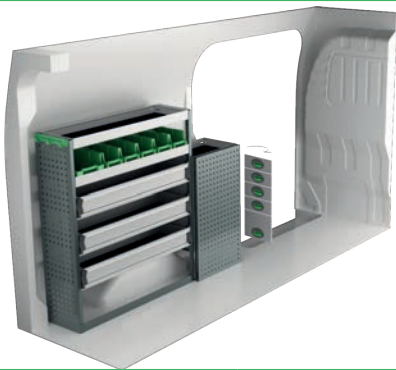
Art.No	LxDxH	Kg	Hr.
F49160	2480x300x1220 mm	53	3,0



Art.No	LxDxH	Kg	Hr.
F49163	1530x300x1220 mm	61	4,0



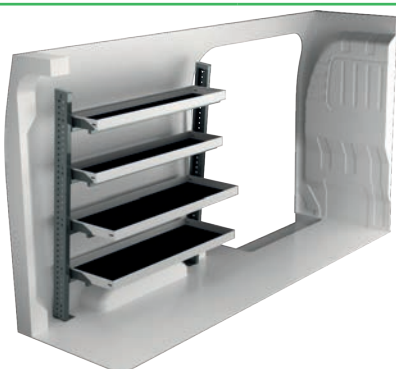
Art.No	LxDxH	Kg	Hr.
F49162	2480x300x1220 mm	70	4,8



Art.No	LxDxH	Kg	Hr.
F49165	1530x300x1220 mm	70	4,9



Art.No	LxDxH	Kg	Hr.
F49164	2480x300x1575 mm	91	5,8



Art.No	LxDxH	Kg	Hr.
F49167	1284x470x1512 mm	52	3,1

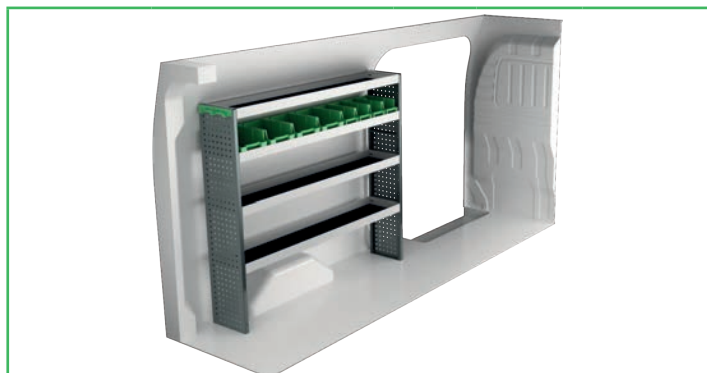


Art.No	Height	Kg	Hr.
F49166	2571x470x1512 mm	97	5,5

# MAXUS e-DELIVER 9 LWB

Suggested hours is the recommended mounting time for experienced retailers.

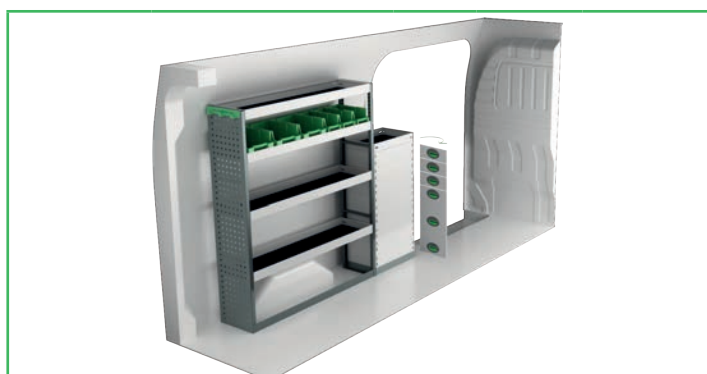
On electric and hybrid vans we recommend mounting by an experienced installer. Batteries and cable harnesses for approximately 400 volt must be taken in consideration. Cost of a floor may be added.



Art.No	LxDxH	Kg	Hr.
F49171	1632x300x1440 mm	41	2,6



Art.No	LxDxH	Kg	Hr.
F49170	2872x300x1440 mm	62	3,0



Art.No	LxDxH	Kg	Hr.
F49173	1709x300x1440 mm	69	4,0



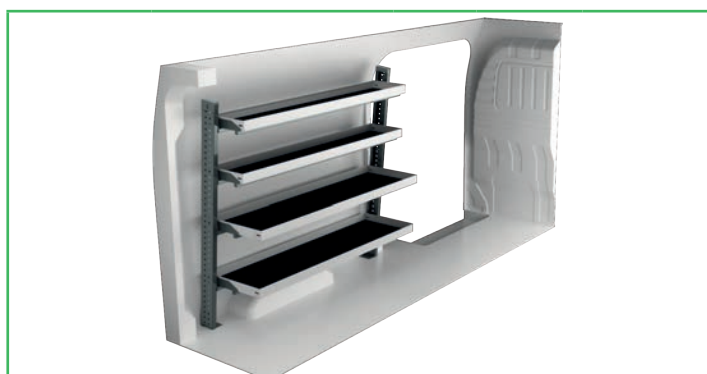
Art.No	LxDxH	Kg	Hr.
F49172	2838x300x1440 mm	82	5,0



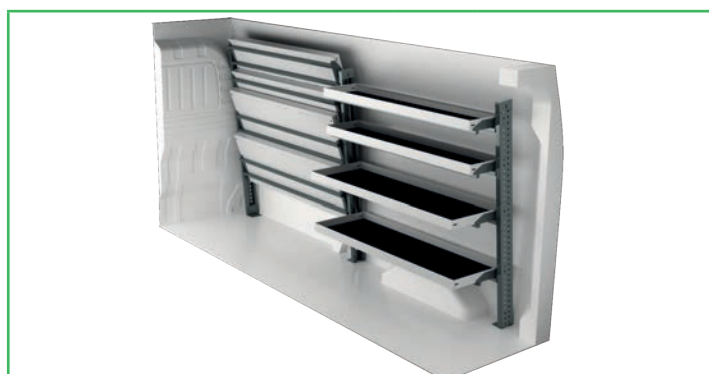
Art.No	LxDxH	Kg	Hr.
F49175	1709x300x1510 mm	71	5,0



Art.No	LxDxH	Kg	Hr.
F49174	2872x300x1575 mm	102	6,0



Art.No	LxDxH	Kg	Hr.
F49177	1676x470x1520 mm	63	3,1



Art.No	LxDxH	Kg	Hr.
F49176	2963x470x1520 mm	108	5,5

# INFORMATION



## GENERALLY

The kits include what you see in the drawing as well as installation parts, rubber mats to all shelves and foam to the drawers. System Edström Billnredningar AB is certified according to SS-EN ISO 9001:2015 to secure the administrative quality and to give us the possibility to keep a high accuracy on deliveries.

All material used in System Edström can be recycled to 100%. We are also certified according to SS-EN ISO 14001:2015.



## REMEMBER

Now that you have chosen to have System Edström in your vehicle you have taken the first and most important step to make your mobile workshop safe and functional. From here on it is up to you how safe and functional your working place will be.

Remember; You as the driver has the full responsibility if you or any one else is injured if the cargo is poorly secured. It is also your responsibility to make sure that the interior is mounted in the safest way possible whatever your choice of workshop, even if they are professionals with knowhow and long experience.

Make sure NOT to exceed the maximum payload of the vehicle.



## SECURITY

Our products are tested in two ways, the first and most important is two crashtests, one (ECE 17:07) performed by Milbrook in England and another one performed by Valutec in France (INRS NS286).

Learn more about us on our homepage, [www.systemedstrom.com](http://www.systemedstrom.com).



### Vice

Depth	Width	Height	Kg	Part.No
360	135	140	10,3	5004

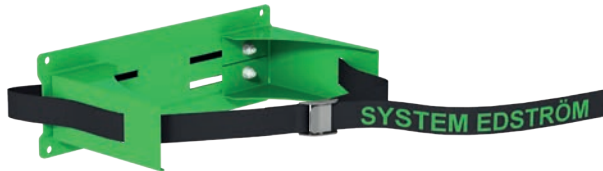
The forged vice is complete with pipe jaw and turning plate. Max opening 140 mm.



### Vice Holders

Depth	Width	Height	Kg	Part.No
1110	210	195	9,4	5012
1110	210	80	8,9	5013

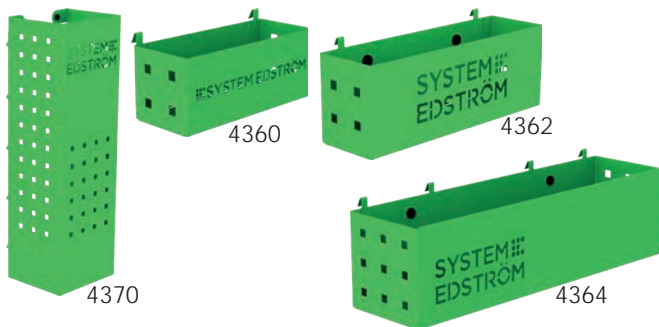
Plate measurement 180x210 mm. Cover 2950 is included.



### Gas bottle holder adjustable

Depth	Width	Height	Tube Ø	Kg	Part.No
150	300	97	< 300	0,9	2910

Liquefied petroleum gas P6 (bottles with 320 mm Ø can be stored after modification).



### Pegboard tray

Depth	Width	Height	Kg	Part.No
82	200	80	0,5	4360
82	285	102	0,8	4362
122	455	122	1,5	4364
153	179	575	3,0	4370

A number of different trays that solve (almost) all storage problems.



### Internal ladder holder

Length	Kg	Part.No
2400	5,5	T8900

Store your ladder on the inside of the roof, pull it back to the rear door in a simple operation. The aluminum rail comes in two parts with a joining piece.



### Hose/Cable rack

Depth	Width	Height	Kg	Part.No
79	267	168	0,5	4077

### Tube holder

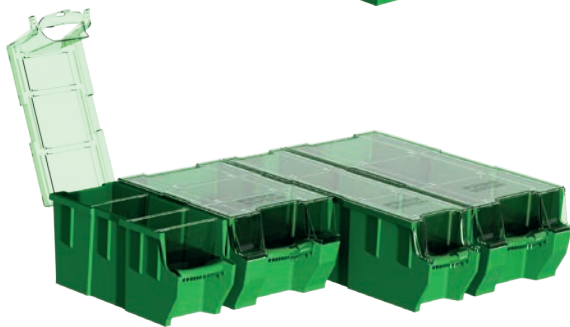
66	194	123	0,4	4349
----	-----	-----	-----	------



### Universal hook

Depth	Width	Height	Kg	Part.No
85	80	100	0,2	4356
61	83	55	0,1	4357

Simplicity at its best, heavy duty hooks, to be mount on a pegboard or hang it on the edge of a shelf.



### Plastic bin for shelves

Depth	Width	Height	Kg	Part.No
300	145	154	0,4	3050
300	235	154	0,5	3052
470	145	154	0,5	3055
470	235	154	0,5	3057

### Transparent lid for plastic bins

Depth	Width	Fits	Kg	Part.No
300	150	3050	0,2	3060
300	240	3052	0,2	3062
470	150	3055	0,2	3065
470	240	3057	0,4	3067

### Dividers for plastic bins

Width	Height	Fits	Part.No
140	154	3050, 55	3070
230	154	3052, 57	3072

### Bracket for dropfront shelves

Depth	Kg	Part.No
300	0,1	3081
470	0,2	3082



### Clothes hook

Depth	Width	Height	Kg	Part.No
31	295	40	0,3	2706
31	465	40	0,5	2708

We call it a clothes hook but, needless to say, you can use it to hang up whatever you want on it.

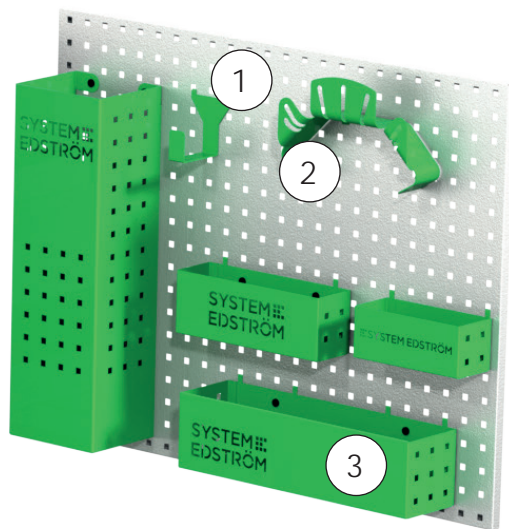
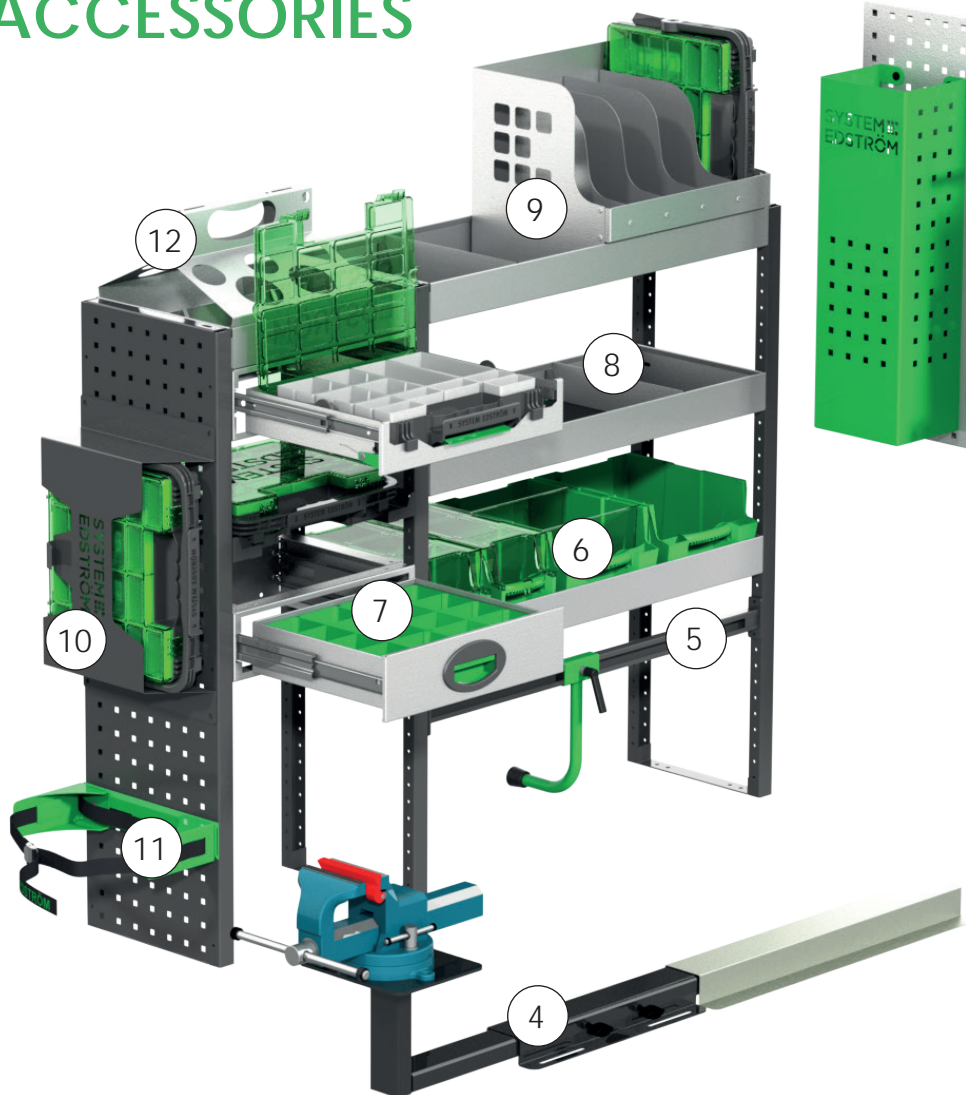


### Strap with brackets

Information	Width	Part.No
1200 mm, nylon strap	25	4365
1000 mm, elastic strap	25	4366

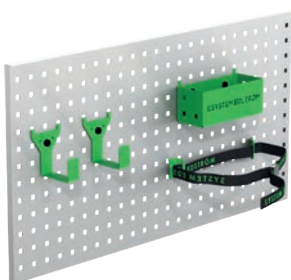
The brackets will fit on our pegboards.

# ACCESSORIES



Pos.	Description
1	Universal hook
2	Cable/Hose rack
3	Pegboard basket
4	Vice and holders
5	Case support
6	Plastic bins
7	Drawer inserts
8	Shelf dividers
9	Tool case/File holder
10	Tool case
11	Gas bottle holders
12	Can/Tube holder

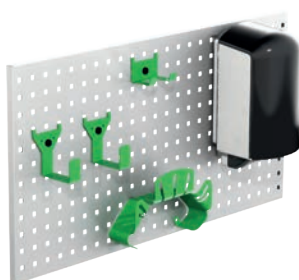
## Accessory package No. 1



Art.No  
F11001

*Pegboard not included.*

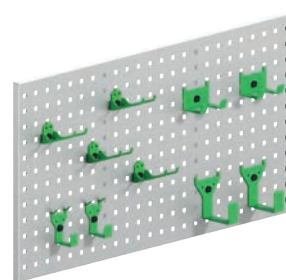
## Accessory package No. 2



Art.No  
F11002

*Pegboard not included.*

## Accessory package No. 3



Art.No  
F11004

*Pegboard not included.*

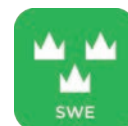
For more information:  
[www.systemedstrom.ie](http://www.systemedstrom.ie)



Up to 5 years  
warranty



Crash tested



Made in Sweden

**SYSTEM  
EDSTRÖM**

**System Edström IRELAND**  
1-4 Block L, Grants Road,  
Greenogue Business Park,  
Rathcoole, Dublin, D24PP28

### CONTACT

Email: [sales@systemedstrom.ie](mailto:sales@systemedstrom.ie)  
[support@systemedstrom.ie](mailto:support@systemedstrom.ie)